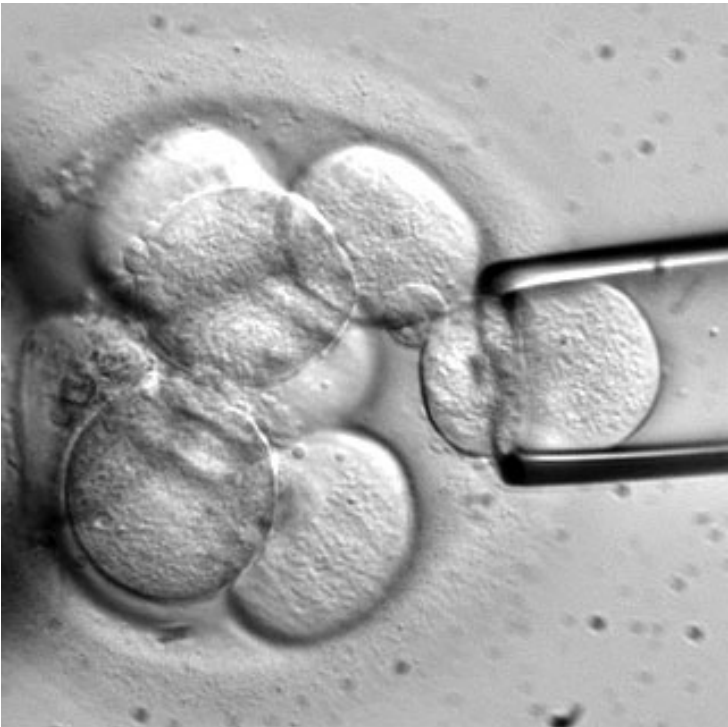


ClinACE enters stem cell therapy development program

08 October 2012 | News | By BioSpectrum Bureau

ClinACE enters stem cell therapy development program



Singapore: ClinACE has collaborated with a stem cell banking and therapy company for conducting end-to-end clinical development program for all their stem cell therapy and has already commenced a study involving type II diabetes. ClinACE has structured the preclinical studies involving immunotoxicity, toxicology and efficacy studies of stem cells on appropriate animal models.

According to a report by Research and Markets, the global stem cell market is estimated to be \$88.3 billion by 2014, growing at a CAGR of 14.8 percent from 2009-14. ClinACE has designed its future business plan based on this upward trend in this industry, and is offering its services to the biopharmaceutical market.

Mr Jayesh Chaudhary, CEO, ClinACE, said that, "This partnership aims to enhance the quality and accelerate the clinical development activities of stem cell therapies. We remain adherent to our strategy of cost-effective coupled with qualitative productivity, as we expand into the pharmaceutical, device and biotech research industry."

ClinACE clinical development program involving stem cell research is in complete adherence to the guidelines established by the ICMR, the Institutional Committee of Stem Cell Research (IC-SCR) and the National Apex Committee of Stem Cell Research (NAC-SCR).

Dr Navneet Sonawane, manager, clinical operations, added, "We are looking forward to this collaborative effort as not only a

business opportunity but with an aim of diversifying our therapeutic area. Under this clinical development program, we have already started with the preparation of the preclinical which are a prerequisite for the conduct of any clinical trial."