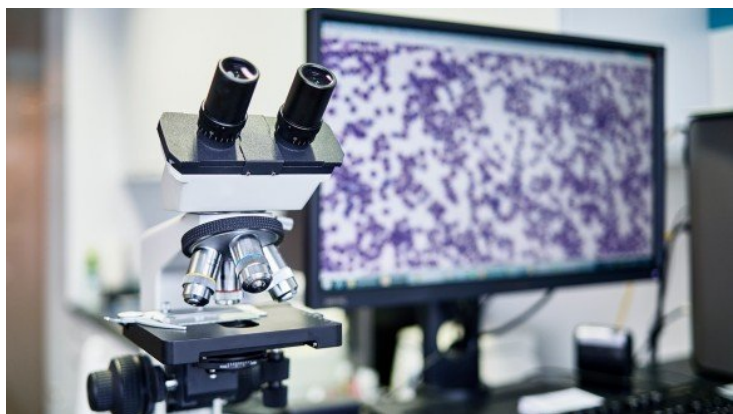


Israel's Ibex Medical Analytics accelerates global momentum in AI-powered pathology

19 February 2026 | News

Strategic leadership transition and expansion in biopharma



Israel-based startup Ibex Medical Analytics has announced continued commercial momentum and expanding global adoption alongside a leadership transition designed to accelerate the company's next phase of growth.

Effective immediately, Yair Heller, formerly Chief Operating Officer, has been appointed Chief Executive Officer, and co-founder Joseph Mossel will lead Ibex's rapidly expanding biopharma division and US clinical growth initiatives.

The company is celebrating a series of significant commercial milestones, including strategically important clinical deployments with two of the largest laboratory networks in Europe, as well as PathGroup and HNL Lab Medicine in the US, as well as significant expansions from existing customers such as Fimlab in Finland. These partnerships underscore the global shift toward AI-powered pathology as the gold standard for cancer detection.

Reflecting this momentum, Ibex doubled the total number of cases running through its platform for the second straight year, grew its customer base by more than 70%, and increased the number of new applications running live in 2025 to more than three times 2024 levels.

By delivering objective, computational scoring of target expression, Ibex enables its biopharma partners to optimise patient selection, strengthen clinical evidence generation, and bridge the gap between clinical validation and real-world implementation.