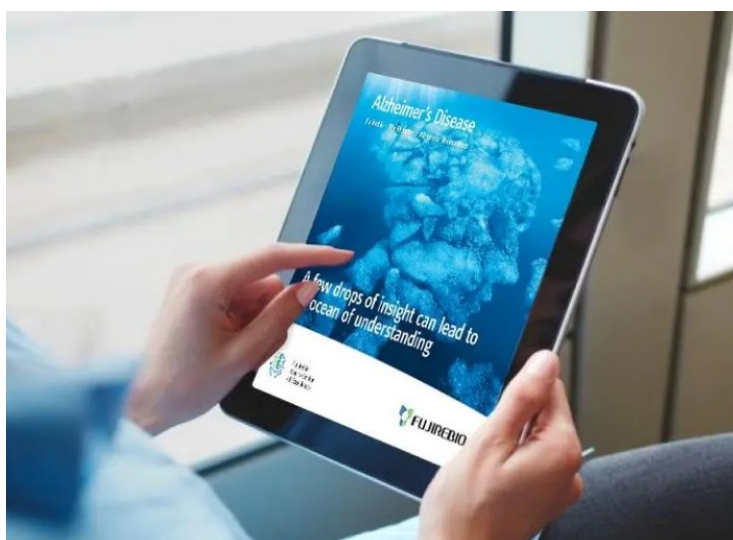


## Fujirebio expands neuro testing portfolio with fully automated Lumipulse® G pTau 217 CSF assay

29 January 2026 | News

**To gain deeper insights into its potential to discriminate Alzheimer's disease (AD) from non-AD dementias early in the disease process**



Japan-based H.U. Group Holdings Inc. and its wholly-owned subsidiary Fujirebio have announced the availability of the Lumipulse G pTau 217 CSF assay for the fully automated LUMIPULSE® G immunoassay analysers.

This CLEIA (chemiluminescent enzyme immunoassay) assay is available for Research Use Only (RUO) and allows for the quantitative measurement of Tau phosphorylated at threonine 217 (pTau 217) in human cerebrospinal fluid (CSF) within just 35 minutes.

Alzheimer's disease (AD) is characterised by the accumulation of neurofibrillary tangles in the brain, composed of hyperphosphorylated tau, and amyloid plaques, consisting of distinct  $\beta$ -amyloid peptides. CSF pTau217 has emerged as an early biomarker for neuropathological changes associated with AD.

This new immunoassay further strengthens Fujirebio's growing portfolio of neurological biomarkers and reinforces the company's leading position in the advancement of associated research tools and diagnostics.

The availability of the assay on the fully automated random-access LUMIPULSE G analysers provides researchers access to convenient, accurate, and robust measurement of pTau 217 in CSF, in addition to blood. Already widely available for routine use in neurological disease testing worldwide, these analyzers meet all necessary quality, throughput, and regulatory requirements.