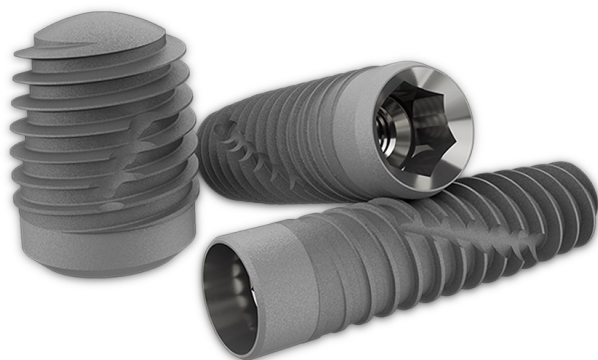


## ZimVie launches Next-Generation TSX® dental Implant in Japan

08 February 2024 | News

**Newest implant innovation is designed for immediacy and peri-implant health**



ZimVie Inc., a global life sciences leader in the dental and spine markets, has launched TSX® Implant in Japan. As ZimVie's largest dental implant market in APAC and fifth largest market globally, Japan is of great strategic importance to ZimVie. The launch of TSX in Japan allows the company to compete head-to-head with premium market leaders in the dental implant space.

TSX Implants are designed for immediate extraction and standard loading protocols as well as placement predictability and primary stability in soft and dense bone. The Implant incorporates features with more than two decades of real-world, clinical data to deliver peri-implant health, crestal bone maintenance, long-term osseointegration, and prosthetic stability.

Integrated with ZimVie's end-to-end digital workflows and engineered with surgical and restorative versatility, the TSX Implant furthers ZimVie's commitment to simplify procedures and optimize practice protocols.

ZimVie's next-generation implant is compatible with the Encode® Emergence 3-in-1 Healing Abutment, Impression Coping, and Scanbody System. To help the surgeon master immediate implants with greater efficiency and more predictability, the TSX Implant is surgically compatible with familiar soft and dense bone protocols, existing tools, and the digital dentistry solutions provided by DTI, ZimVie's fully owned lab in Japan. The TSX Implant first made its debut in the United States in November 2022 and has seen tremendous success in the market to date.