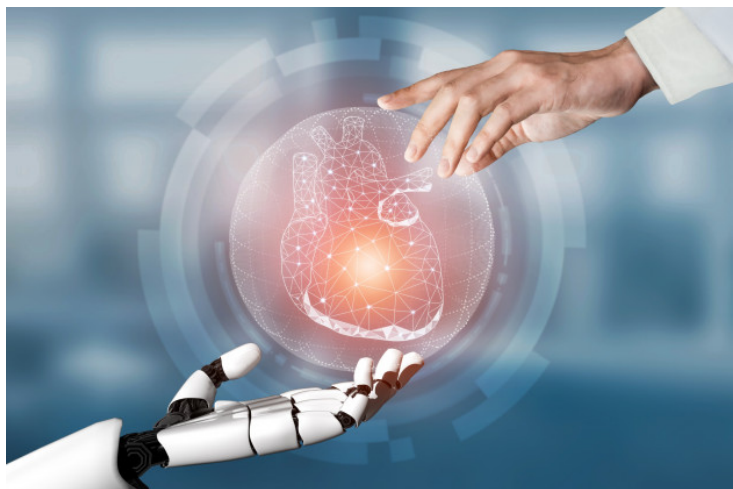


Fujitsu and University of Tokyo Hospital embark joint AI R&D for heart disease

11 October 2021 | News

The collaboration will validate the effectiveness of proprietary electrocardiographic AI technology for accurate detection of abnormal heart movements



Fujitsu Limited has started joint clinical research with the University of Tokyo Hospital to verify the effectiveness of artificial intelligence technology to estimate abnormal heart movements based on electrocardiogram data. The research is planned to commence at the University of Tokyo Hospital from October 25.

Since December 2019, Fujitsu has been making progress with the research and development of proprietary AI technology in collaboration with the University of Tokyo Hospital. This research draws on data from patients that have visited the University of Tokyo Hospital to date and includes approximately 630,000 pieces of electrocardiographic data and data from approximately 140,000 cardiac ultrasounds (echocardiography). This initiative has now succeeded in detecting patients with abnormal heart movements with high accuracy.

The AI will be used in clinical field research to estimate the presence or absence of abnormal heart movements based on the data of patients undergoing electrocardiographic procedures at the University of Tokyo Hospital. Patients identified by the AI as having abnormal heart movements will undergo echocardiography, and the effectiveness will be verified by comparing the results of doctors' diagnoses with the results predicted by the AI.

Fujitsu will leverage this AI to detect heart disease at an early stage to prevent progression to serious illness in patients and strengthen its vision of "Healthy Living", promoting well-being for people throughout society. This initiative will be introduced at Fujitsu ActivateNow 2021, a global event to be held from October 12 in online format.