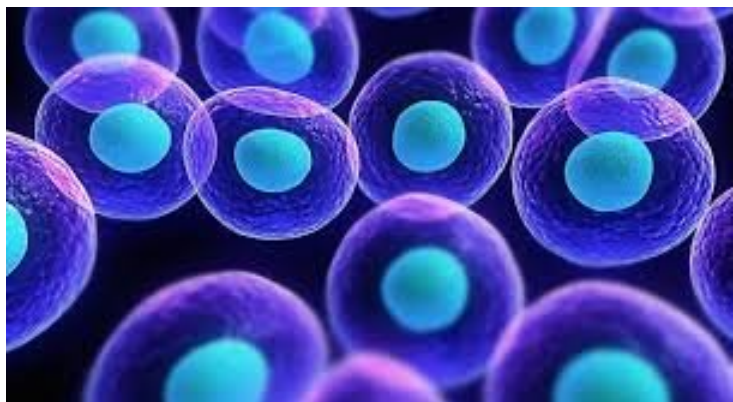


## Beroni Group, Jinshui Park to develop stem cell technologies in China

06 September 2019 | News

**Jinshui Park has agreed to provide the office facilities, related infrastructure, and local government guidance and support and Beroni will be responsible to develop and implement the business plan**



Beroni Group Limited and Zhengzhou Jinshui Science & Education Park have signed a strategic cooperation agreement to jointly develop stem cell technologies in China.

Under the strategic agreement, Beroni will help set up the facility and infrastructure to (1) provide research in stem cell technology; (2) develop a national technology innovation centre; (3) establish an international precision medicine service centre; (4) create an immunotherapy resource and exchange centre; and (5) provide modern integrated aged and medical care services.

A new company in partnership with a related entity of Jinshui Park will be formed for this business venture. Jinshui Park has agreed to provide the office facilities, related infrastructure, and local government guidance and support. Beroni will be responsible to develop and implement the business plan, to raise the necessary funds from local and overseas sources, and to recruit local and international talents.

Mr. Jacky Zhang, Executive Chairman of Beroni Group said: "As part of the international development of Beroni Group, deployment of our plans in China is a very crucial task. The signing of the agreement is a new beginning for Beroni's business development in China. Jinshui Park has laid a solid foundation for Beroni to develop in Zhengzhou, Henan. Beroni hopes to implement its key research projects at Zhengzhou Jinshui Park.

The signing of this agreement is not only an affirmation of Zhengzhou City's recognition of the innovative capability of Beroni Group, but also marks a new step in Beroni's strategic development. The two sides will jointly embark on a new journey full of opportunities and challenges and will work closely together to accelerate the pace of industrial development and make contributions to regional economic and social development in China.