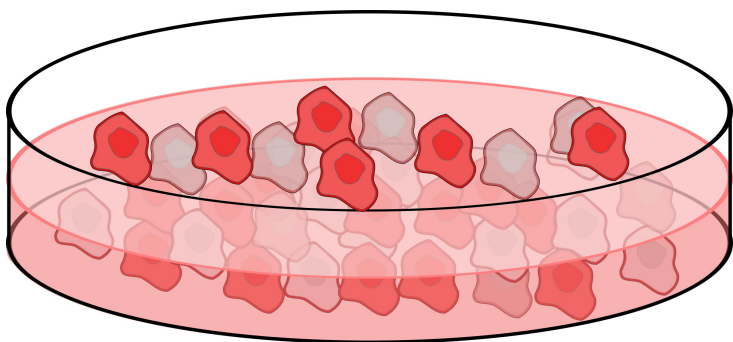


## Elpis human cells can replace animal experiments in Drug Discovery

26 October 2018 | News | By Sonali Wankhade

**“The causes for drug failure are likely due to the biological differences between the current animal models and cell lines used for drug discovery and human biology. The solution to this problem is to integrate human cell models early into the drug development process.”**



Elpis Biomed Ltd. (Elpis), a University of Cambridge spin-out developing high quality human cells via its proprietary OPTi-OX platform, is pleased to announce that life science entrepreneur Dr. Jonathan Milner, Deputy Chairman and Founder of Abcam, mentioned the Company, stating: “Elpis human cells can fix the broken drug discovery process by replacing animal experiments,” during his plenary lecture at the recent European Laboratory Research & Innovation Group (ELRIG) Drug Discovery Conference.

During his plenary address, on ‘Opportunities in the Golden Age of Biology’, Dr. Milner asked whether the drug discovery process is ‘broken’. Dr. Milner explained: “Over the past decades, the return on investment on pharmaceutical research and development has suffered exponential decline. Main contributors to the rising costs of drug development are high failure rates, both at the pre-clinical and clinical stage.”

He continued: “The causes for drug failure are likely due to the biological differences between the current animal models and cell lines used for drug discovery and human biology. The solution to this problem is to integrate human cell models early into the drug development process.”

Although human cells are better models for drugs screening, few were featured at the ELRIG conference. Dr Milner commented, “The lack of human cell models being utilised boils down to the fact that the current technology for generating patient-derived cells does not meet the requirements for drug screening.” Elpis, backed by Milner’s personal investment, “provides the first robust and scalable solution of functional biologically-relevant cells for drug development,” he added.

Dr. Mark Kotter, scientific founder of Elpis BioMed concluded: “Elpis’ mission is to make human cells easy. Our proprietary OPTi-OX technology allows us to produce human cells of unprecedented quality, purity, and consistency. We are developing a wide range of cell products to support the research, drug discovery, and cell therapy communities and are delighted that our technology has been brought to the attention of an audience of drug discovery experts by an industry heavy-weight like Dr Milner.”